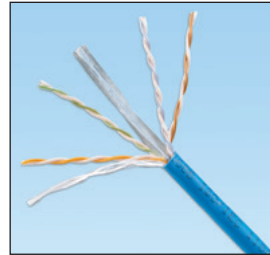


# NetKey® Category 6 U/UTP Copper Cable

# PANDUIT®

## DATA SHEET

Category 6 UTP copper cable meets ANSI/TIA-568-C.2 Category 6 and ISO 11801 2nd Edition Class E channel standards. The conductors are 24 AWG copper insulated with HDPE polymer. The copper conductors are twisted in pairs, separated by a cross divider and covered by a low smoke zero halogen or flame retardant PVC (CM or CMR) jacket.



## technical information

<b>Electrical performance:</b>	Certified performance in a 4-connector configuration up to 100 meters, meets ANSI/TIA-568-C.2 Category 6 and ISO 11801 2nd Edition Class E channel requirements
<b>Conductor/insulator:</b>	24 AWG solid copper insulated with HDPE polymer
<b>Flame rating:</b>	LSZH-1: IEC 60332-1, 60754-1, 60754-2, 61034-2 LSZH-3: IEC 60332-3, 60754-1, 60754-2, 61034-2 CM: UL 1685 CMR: UL 1666
<b>PoE compliance:</b>	Meets IEEE 802.3af and IEEE 802.3at for PoE applications
<b>Installation tension:</b>	110N (25 lbf.) maximum
<b>Temperature rating:</b>	0° to 50°C (32° to 122°F) during installation -20° to 60°C (14° to 140°F) during operation
<b>Cable jacket:</b>	LSZH – Low Smoke Zero Halogen CM – PVC CMR – Flame retardant PVC
<b>Cable diameter:</b>	5.6mm (0.222 in.) nominal
<b>Cable weight:</b>	LSZH – 12.5 kg/305m (27 lbs./1000 ft.) CM – 12 kg/305m (26 lbs./1000 ft.) CMR – 13 kg/305m (28 lbs./1000 ft.)
<b>Packaging:</b>	305m (1000 ft.) easy-pay-out box LSZH – 14.5 kg/305m (30 lbs./1000 ft.) PVC (CM) – 14 kg/305m (29 lbs./1000 ft.) PVC (CMR) – 15 kg/305m (31 lbs./1000 ft.) Packaged tested to ISTA procedure 1A

## key features and benefits

<b>Third party tested</b>	Cable has been tested as part of the NetKey® Category 6 UTP Copper Cabling System by an independent laboratory and complies with the electrical channel requirements of the following standard: ANSI/TIA-568-C.2 Category 6 standard
<b>Descending length cable markings</b>	Easy identification of remaining cable reduces installation time and cable scrap
<b>Cross divider</b>	Separates twisted pairs for robust cable performance
<b>Easy payout box</b>	Ensures proper performance and provides quick installation

## applications

Applications include:

- Ethernet 10BASE-T, 100BASE-T (Fast Ethernet), and 1000BASE-T (Gigabit Ethernet)
- 155 Mb/s ATM, 622 Mb/s ATM, 1.2 Gb/s ATM
- Token ring 4/16

[www.panduit.com](http://www.panduit.com)

### NetKey® Network Components

#### NetKey® UTP Copper Cable

<b>LSZH:</b>	NUL6C04BU-C*
<b>LSZH-3:</b>	NUZ6C04BU*-CE
<b>CM:</b>	NUC6C04BU-C*
<b>CMR:</b>	NUR6C04BU-C

#### NetKey® Category 6 UTP Jack Module

<b>Punchdown:</b>	NK688MIW**
-------------------	------------

#### NetKey® Category 6 UTP Patch Cords – CM

<b>Foot lengths:</b>	NK6PC3^Y
<b>Meter lengths:</b>	NK6PC1M^Y

#### NetKey® Category 6 Punchdown Patch Panels

<b>12-port:</b>	NK6PPG12WY
<b>24-port, 1 RU:</b>	NK6PPG24Y
<b>48-port, 2 RU:</b>	NK6PPG48Y

#### NetKey® Category 6 All Molded Punchdown Patch Panels

<b>24-port, 1 RU:</b>	NK6PP24P
<b>48-port, 2 RU:</b>	NK6PP48P

#### NetKey® Flush Mount Modular Patch Panels

<b>Angled, 24-port, 1 RU:</b>	NKPPA24FMY
<b>Angled, 48-port, 2 RU:</b>	NKPPA48FMY
<b>Flat, 24-port, 1 RU:</b>	NKPP24FMY
<b>Flat, 48-port, 2 RU:</b>	NKPP48FMY

#### NetKey® Category 6 All Molded Modular Patch Panels

<b>24-port, 1 RU:</b>	NKPP24P
<b>48-port, 2 RU:</b>	NKPP48P

### Termination and Cable Prep Tools

#### JackRapid™

<b>Termination Tool:</b>	JR-PAN-2
<b>Conductor snipping tool:</b>	CWST
<b>Conductor stripping tool:</b>	CJAST

\*For standard cable colors other than BU (Blue), replace BU in part number with WH (White) or IG (International Gray). Contact customer service for region availability. Standard pallets are configured in 2 layers, 10 cartons per layer, total of 20 cartons per pallet. Add E to end of part number for European pallets which are configured in 2 layers, 7 cartons per layer, total of 14 cartons per pallet.

\*\*For standard colors other than Off White (IW), replace suffix with EI (Electrical Ivory), IG (International Gray), WH (White), BL (Black), BU (Blue), RD (Red), YL (Yellow), GR (Green), or VL (Violet). Add -Q to end of part number for 25 pack convenience package.

^For standard foot lengths other than 3 feet, replace the 3 in the part number with 5, 7, 10, 14 or 20. For standard colors other than Off White, add suffix BU (Blue), RD (Red), YL (Yellow) or GR (Green) before the Y at the end of the part number. For example, the part number for a blue, Category 6, 5-foot patch cord is NK6PC5BUY.

^^For standard meter lengths other than 1 meter, replace the 1 in the part number with 2, 3, 4 or 5. For standard colors other than Off White, add suffix BU (Blue), RD (Red), YL (Yellow) or GR (Green) before Y at the end of the part number. For example, the part number for a blue, Category 6, 5-meter patch cord is NK6PC5MBUY.

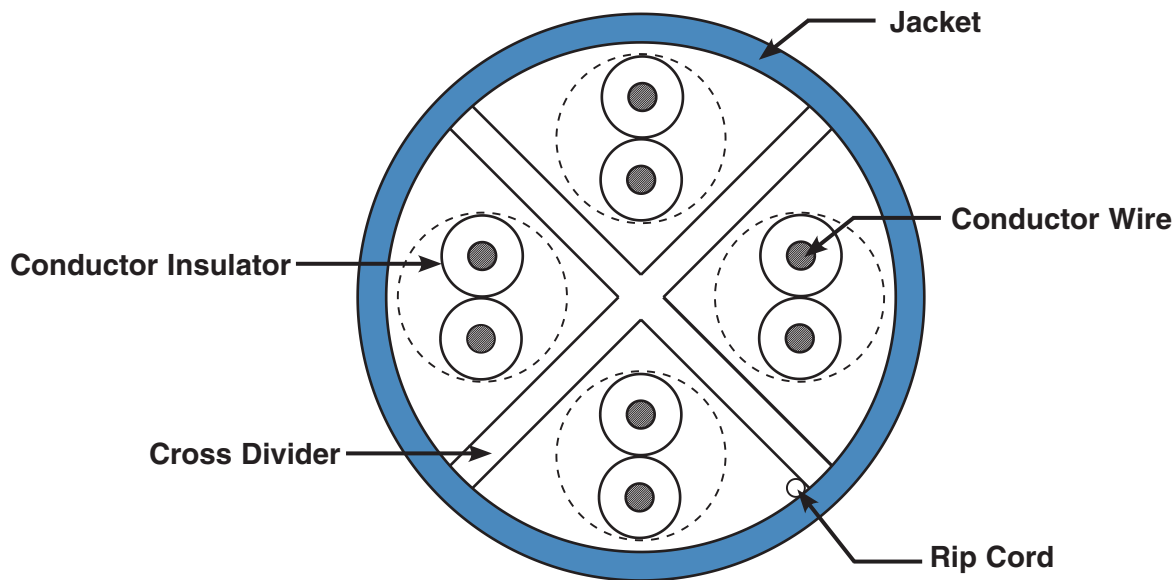
Fluke JackRapid™ Termination Tool available through distribution. To locate the local office, visit [www.flukenetworks.com/contact](http://www.flukenetworks.com/contact). JackRapid™ is a trademark of Fluke Networks.

# NetKey® Category 6 U/UTP Copper Cable

## additional specifications

Mechanical Test	
<i>Ultimate Breaking Strength</i>	>400 N (90 lbf.)
<i>Minimum Bend Radius</i>	4 x cable diameter
Electrical Test	
<i>Nominal Velocity of Propagation (NVP)</i>	65%

## cable construction



### WORLDWIDE SUBSIDIARIES AND SALES OFFICES

PANDUIT CANADA  
Markham, Ontario  
cs-cdn@panduit.com  
Phone: 800.777.3300

PANDUIT EUROPE LTD.  
London, UK  
cs-emea@panduit.com  
Phone: 44.20.8601.7200

PANDUIT SINGAPORE PTE. LTD.  
Republic of Singapore  
cs-ap@panduit.com  
Phone: 65.6305.7575

PANDUIT JAPAN  
Tokyo, Japan  
cs-japan@panduit.com  
Phone: 81.3.6863.6000

PANDUIT LATIN AMERICA  
Guadalajara, Mexico  
cs-la@panduit.com  
Phone: 52.33.3777.6000

PANDUIT AUSTRALIA PTY. LTD.  
Victoria, Australia  
cs-aus@panduit.com  
Phone: 61.3.9794.9020

For a copy of Panduit product warranties, log on to [www.panduit.com/warranty](http://www.panduit.com/warranty)

**PANDUIT®**

For more information  
**Visit us at [www.panduit.com](http://www.panduit.com)**  
Contact Customer Service by email: [cs@panduit.com](mailto:cs@panduit.com)  
or by phone: 800.777.3300

©2016 Panduit Corp.  
ALL RIGHTS RESERVED.  
**NKDS29--WW-ENG**  
Replaces WW-NKDS13  
2016-09-08