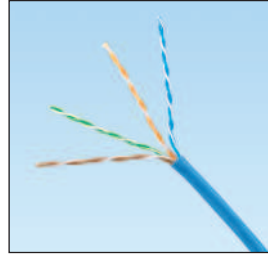


TX5500™ Category 5e Copper Cable – UTP

specifications

Category 5e cable shall exceed ANSI/TIA-568-C.2 and IEC 61156-5 Category 5e component standards. The conductors shall be 24 AWG copper insulated with HDPE. The copper conductors shall be twisted in pairs and all four pairs shall be covered by a low smoke zero halogen (LSZH) jacket.



technical information

Electrical performance:	Certified channel performance in a 4-connector configuration up to 100 meters and exceeds the requirements of ISO 11801 Class D and ANSI/TIA-568-C.2 Category 5e standards at swept frequencies up to 100 MHz Certified component performance up to 100 meters and exceeds the component requirement of the IEC 61156-5 and ANSI/TIA-568-C.2 Category 5e component standards at swept frequencies up to 100 MHz
Conductors/insulators:	24 AWG solid copper insulated with HDPE
Flame rating:	LSZH – IEC 60332-3-25 (-3d), IEC 60754-1 and -2, IEC 61034-2, NBN C 30-004 (F2)
PoE compliance:	Meets IEEE 802.3af and IEEE 802.3at for PoE applications
Installation tension:	110 N (25 lbf) maximum
Temperature rating:	0°C to 50°C (32°F to 122°F) during installation -20°C to 75°C (-4°F to 167°F) during operation
Cable jacket:	LSZH – Low Smoke Zero Halogen
Cable diameter:	5.2mm (0.205 in.) nominal
Cable weight:	10 kg/305m (22 lbs./1000 ft.)
Packaging:	305m (1000 feet) or 500m (1640 feet) on a reel Package tested to ISTA Procedure 1A

key features and benefits

Third party tested	Cable has been tested as part of the TX5500™ Category 5e U/UTP Copper Cabling System by an independent laboratory and complies with the electrical channel requirements of ANSI/TIA-568-C.2 Category 5e and ISO 11801 Class D standards
Descending length cable markings	Easy identification of remaining cable reduces installation time and cable scrap
Tested beyond the standards	Cable has been characterized to 450 MHz, 350 MHz above the standard
Packaged on a reel	Ensures proper performance and provides quick installation

applications

TX5500™ U/UTP Copper Cable is a component of the Panduit® TX5500™ U/UTP Copper Cabling System. This end-to-end system provides Gigabit Ethernet performance with usable bandwidth beyond 100 MHz. With certified performance to the ANSI/TIA-568-C.2 Category 5e and ISO 11801 Class D standards, this system will support the following applications:

- Ethernet 10BASE-T, 100BASE-T (Fast Ethernet), 1000BASE-T (Gigabit Ethernet)
- 155 Mb/s ATM, 622 Mb/s ATM
- Token ring 4/16

**TX5500™ UTP
Copper Cabling System**

TX5500™ UTP Copper Cable

LSZH: PUZ5504*

**Mini-Com® TX5e™
PLUS UTP Jack Module**

Jack Module: CJ5E88TGIW**

TX5e™ UTP Patch Cords – LSZH

Meter lengths: UTPCHL1^MY

**DP5e™ Angled Punchdown
Patch Panels**

24-port, 1 RU: DPA245E88TGY

48-port, 2 RU: DPA485E88TGY

**DP5e™ Flat Punchdown
Patch Panels**

12-port, 1RU: DP125E88TGY

24-port, 1 RU: DP245E88TGY

48-port, 2 RU: DP485E88TGY

**Mini-Com® Angled Flush Mount
Modular Patch Panels**

24-port, 1 RU: CPPA24FMWBLY

48-port, 2 RU: CPPA48FMWBLY

**Mini-Com® Flat Flush Mount
Modular Patch Panels**

24-port, 1 RU: CPP24FMWBLY

48-port, 2 RU: CPP48FMWBLY

Termination and Cable Prep Tools

**Termination
tools:** EGJT or TGJT

**Wire
snipping tool:** CWST

**Wire
stripping tool:** CCAST

*Color and pallet configurations:
Replace * with BU-CEG (Blue) or WH-CEG (White) to designate that color in a Euro pallet of 24 reels, 305m each.
Replace * with BU-CED (Blue) or WH-CED (White) to designate that color in a Euro pallet of 18 reels, 500m each.

**To designate color, change IW (Off White) to AW (Arctic White), EI (Electric Ivory), IG (International Gray), WH (White), BL (Black), OR (Orange), RD (Red), BU (Blue), GR (Green), YL (Yellow), or VL (Violet). Add -24 to end of part number for 24-pack convenience package.

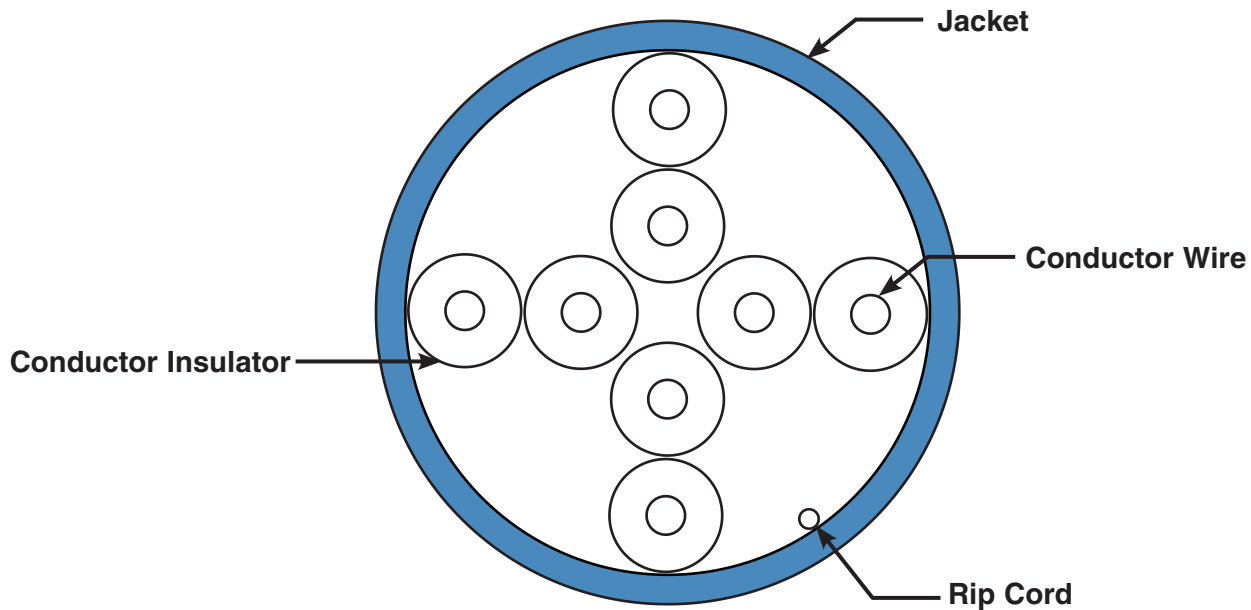
^For standard meter lengths other than 1 meter, replace the 1 in the part number with 1 – 10 meters (one meter increments), 0.5, 1.5, 2.5, 15, or 20. For standard colors other than Off White, add suffix BU (Blue), RD (Red), YL (Yellow), or GR (Green) before Y at the end of the part number. For example, the part number for a blue 5-meter patch cord is UTPCHL5MBUY.

TX5500™ Category 5e Copper Cable – UTP

additional specifications

Mechanical Test	
Ultimate Breaking Strength	>400 N (90 lbf.)
Minimum Bend Radius	4 x cable diameter
Electrical Test	
Nominal Velocity of Propagation (NVP)	65%
Operating Voltage, Maximum	80V

cable construction



WORLDWIDE SUBSIDIARIES AND SALES OFFICES

PANDUIT CANADA
Markham, Ontario
cs-cdn@panduit.com
Phone: 800.777.3300

PANDUIT EUROPE LTD.
London, UK
cs-emea@panduit.com
Phone: 44.20.8601.7200

PANDUIT SINGAPORE PTE. LTD.
Republic of Singapore
cs-ap@panduit.com
Phone: 65.6305.7575

PANDUIT JAPAN
Tokyo, Japan
cs-japan@panduit.com
Phone: 81.3.6863.6000

PANDUIT LATIN AMERICA
Guadalajara, Mexico
cs-la@panduit.com
Phone: 52.33.3777.6000

PANDUIT AUSTRALIA PTY. LTD.
Victoria, Australia
cs-aus@panduit.com
Phone: 61.3.9794.9020

For a copy of Panduit product warranties, log on to www.panduit.com/warranty

For more information

Visit us at www.panduit.com

Contact Customer Service by email: cs@panduit.com
or by phone: 800.777.3300

PANDUIT®

©2014 Panduit Corp.
ALL RIGHTS RESERVED.
COSP333--WW-ENG
Replaces WW-COSP218
8/2014