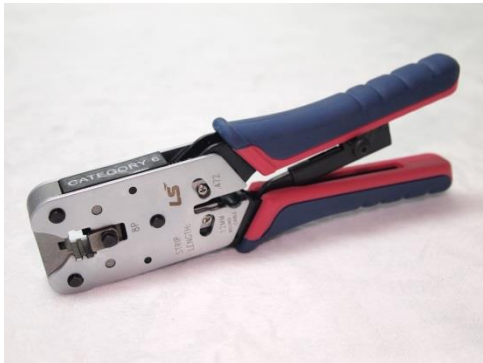


DS CODE:  
**210201**

## LS Simple™ Cabling Solution

### LS Simple™ Crimping Tool



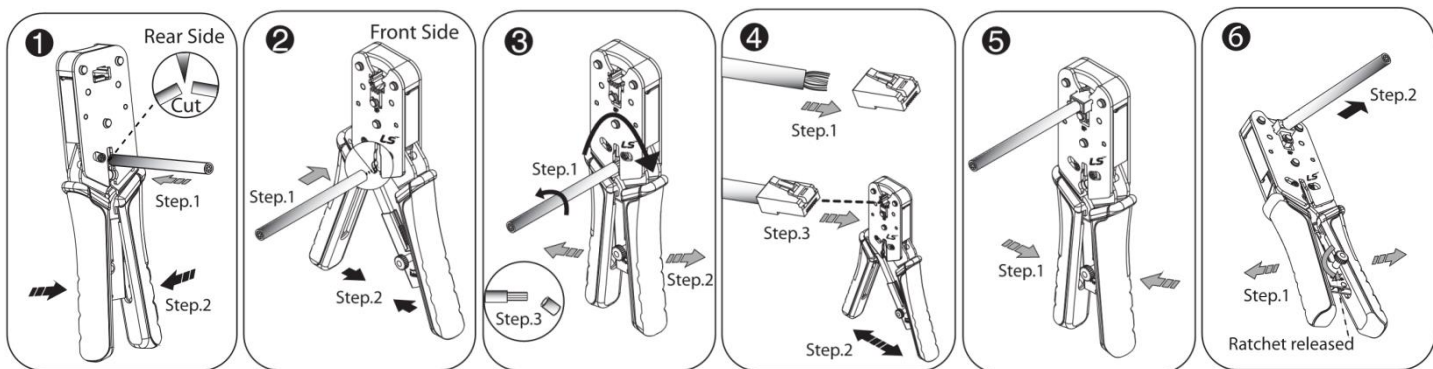
#### Specification

- Operating/Storage Temperature Range : 10℃~60℃
- Humidity : 10%~90% RH
- Material : AL-ZN and steel with ratchet
- RoHS compliant

#### Part Numbers

Description	Part Numbers
Crimping Tool for Category 5e Modular Plug	LS-CT-C5E-SI1
Crimping Tool for Category 6 Modular Plug	LS-CT-C6-SI1

#### Instructions



1. The cutter is on the rear side of the tool to cut the cable.  
Turn the tool to its rear side so that cutter could facing you.  
Insert the cable into the upper round hole and then squeeze the handles.
2. The stripper is on the front side of the tool to Strip the cable.  
Insert the cable into the round stripping hole and then squeeze the handles.
3. Turn the cable in counter-clockwise direction and the tool in clockwise direction at the same time.  
Pull out the cable and remove the outer sheath.
4. Insert the stripped cable into the plug.  
Make sure the wiring scheme follows T568A or T568B.  
Place the modular plug with cable into the holder of the tool.
5. Make sure the stripper wire is between the tab and gold contacts to crimp modular plug.  
Squeeze the handles until they stop.
6. Release the handles and remove the crimped plug from the tool.  
Ratchet released:  
If an error occurred during the crimping process, you may turn the screw on the ratchet in counter-clockwise direction to release the handles of the tool.