

DS CODE:
210105

LS Simple™ Cabling Solution

LS-EZT-TOOL-FR

Description

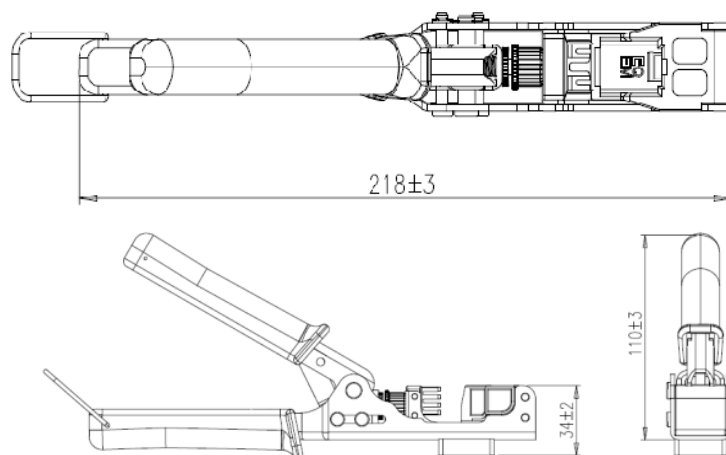
It can easily install 8Pin IDC connecting for Category 5e/6/6A Modular Jack by using LS Easy Termination Tool.



Specification

- Main Body: Carbon steel
- Replaceable Blade: Alloy steel
- Blade life time: more than 2000 times
- Finished: Block oxide finished
- Jack Holder: High-impact PC+ABS resin, UL 84 V-0 rated
- Grip: Polyvinylchloride(PVC resin), Blue
- RoHS compliant
- Weight: 380± 20g

Drawing



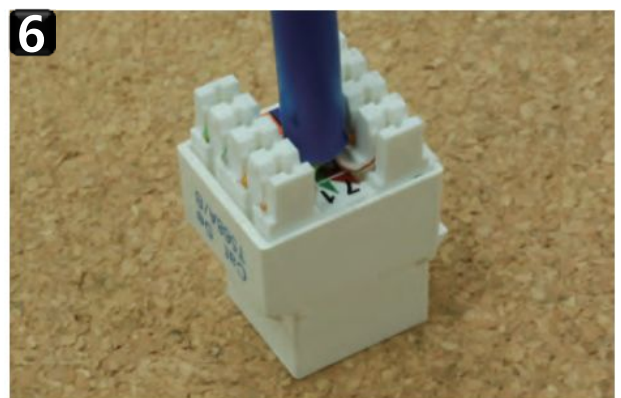
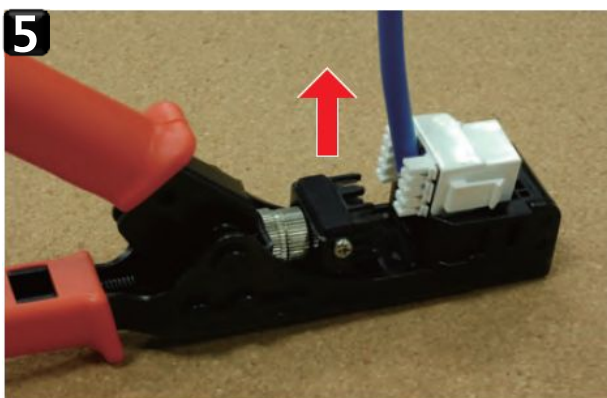
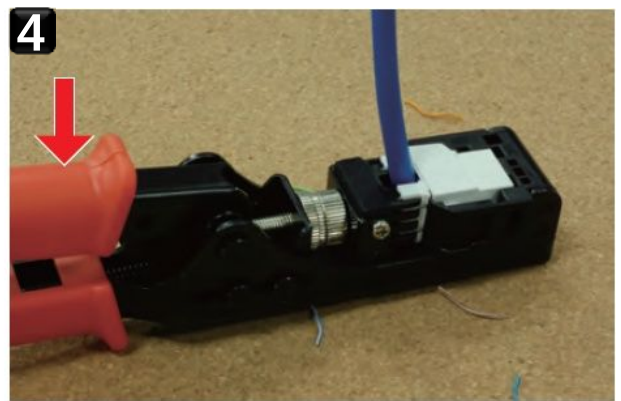
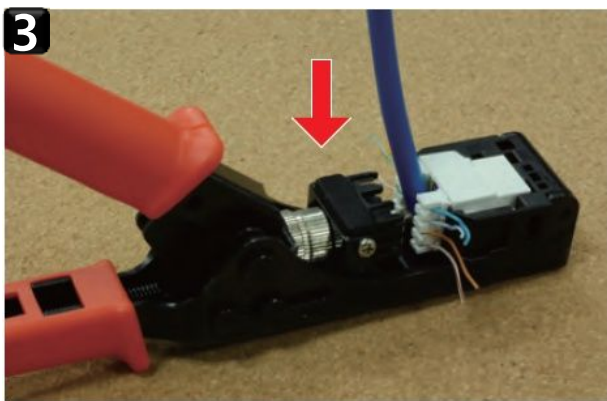
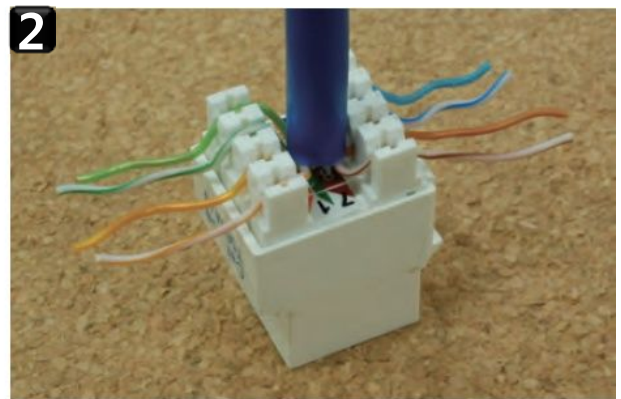
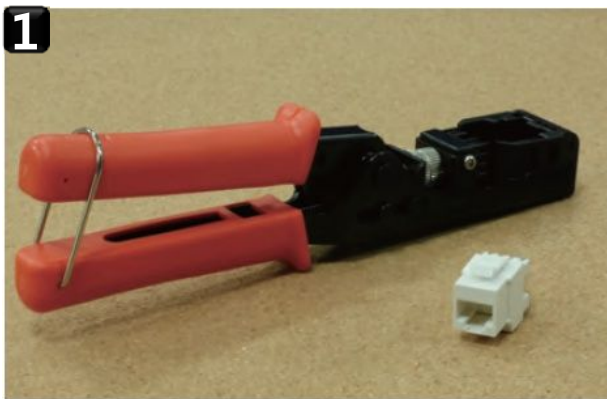
Part Numbers

Description	Part Numbers	Compatible Items
Easy Termination Tool for RF(RIDC) type Modular Jack	LS-EZT-TOOL-FR	Modular Jack: LS-MJ-UC5E(SC5E)-xx-RIDC, LS-MJ-UC6-xx-RIDC Patch Panel: LS-PP-UC5E(SC5E)-24(48)P-xx-RI, LS-PP-UC6(SC6)-24P(48P)-xx-RI

DS CODE:
210105

LS Simple™ Cabling Solution

LS-EZT-TOOL-FR INSTRUCTIONS



1. Termination tool with 180 degree LS-UC5E(UC6)(SC5E)(SC6)-xx-RIDC keystone jack.
2. Place the wire into the wire slots according to the wire scheme.
3. Put the keystone jack into the termination tool in the right position.
4. Squeeze the tool then terminate all wire and trim the excess wire at the same time.
5. Remove the keystone jack vertically away from the termination tool.
6. Complete