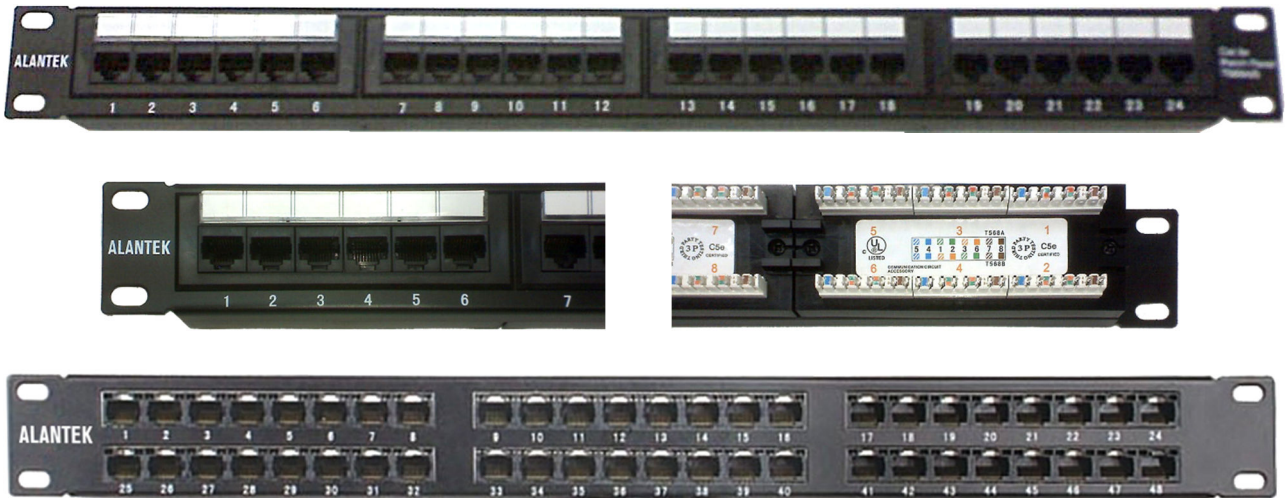




## Cat 5E Unshielded Dual IDC Patch Panel



### Features

- Dual IDC allows both 110 and Krone tools to be used for termination
- Comes with front labels
- Support both T568A and T568B wiring
- Support Gigabit Ethernet application

### Characteristics

- Current Rating: 1.5 amp (max.)
- Voltage Rating: 150 V
- Contact Resistance: 20 m-Ω
- Insulation Resistance: 500 m-Ω
- Dielectric Withstand Voltage: 1000 V AC
- RMS, 60 Hz 1 min
- IDC Termination: Dual (110 & Krone)
- Housing: PC UL94V-0
- IDC: PC UL94V-0, accept 22-26 AWG Solid Wire
- PCB: FR4 1.6mm (0.4") thickness, 2 layers
- Contact: PC UL94V-0, 0.45mm (0.018")

### Standards

- ANSI/TIA 568C.2
- ISO/IEC 11801
- CENELEC EN50173
- UL 1863

| Part Number #   | Description  |
|-----------------|--|
| 302-201001-2400 | 1U 24 Port Cat 5E Unshielded Dual IDC Patch Panel with Label |
| 302-201002-4800 | 2U 48 Port Cat 5E Unshielded Dual IDC Patch Panel with Label |
| 302-201001-4800 | 1U 48 Port Cat 5E Unshielded Dual IDC Patch Panel            |