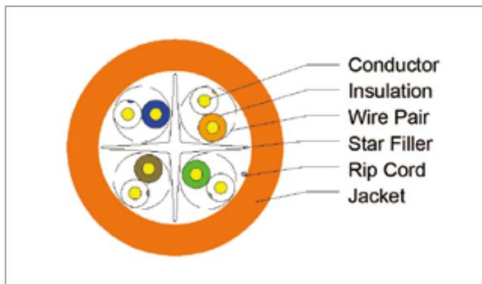
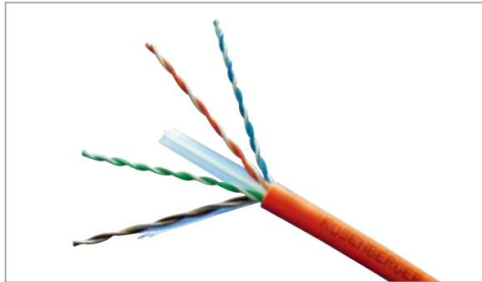


Apus™ Cat.6 UTP and FTP Cable

Apus™ Cat.6 UTP Data Cable



Application

Apus™ Cat.6 Data Cable for structured premise cabling transmits voice, data and video signals. It supports current high-bandwidth applications, and is especially suitable for applications of Fast-Ethernet.

- VoIP
- ISDN
- Token ring
- 100 Mbps TP-PMD
- Analog and digital video
- TR-16 active and passive
- 155 Mbit /622Mbit /1.2 Gbit ATM
- 10baseT/100baseTX Fast /1000baseTX Gigabit Ethernet

Features

HDCS® Apus™ indoor and outdoor Cat.6 UTP cables are designed for unshielded cabling systems. HDCS® Apus™ Cat.6 cables exceed requirements of TIA 568-C.2 and ISO/IEC11801-2nd-Edition with significant margins on all parameters. Cables are available in different jacket materials of various flame-retardant levels.

Construction

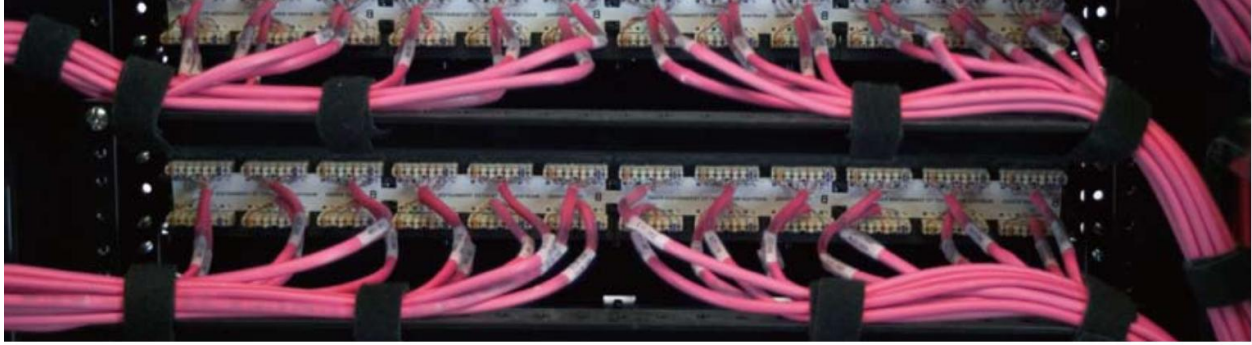
Construction: 4×2×AWG23
 Conductor: AWG 23 Solid copper
 Insulation: HDPE
 Core: 4 twist pairs
 Sheath: PVC, LSZH or PE
 Colour: Grey, Orange, and Black
 Nominal Diameter: 6.3 mm

Electrical Performance at 20°C

DC resistance	≤9.38ohm/100m
Unbalanced resistance	≤5%
Unbalance capacitance	≤330pF/100m
Capacitance	≤5.6nF/100m
Dielectric strength	DC 1kv (3s No Fail)
Insulation resistance	≥5000Mohm.Km
Impedance	1-250MHz (100±15) ohm 250-600MHz (100±25) ohm
Delay skew	≤45ns

Mechanical Performance at 20°C

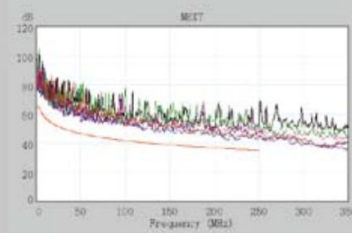
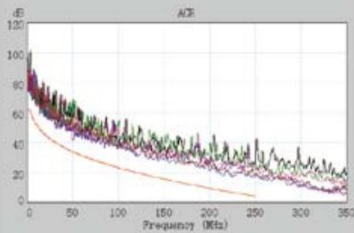
Bending radius	
During installation (min.)	8×outer diameter
Installed (min.)	4×outer diameter
Temperature range	
During installation	0°C to +50°C
Installed	-20°C to +60°C



High-Frequency Performance at 20°C

Frequency (MHz)	Attenuation (dB/100m)	NEXT (dB)	RL (dB)	PSNEXT (dB)	ELFEXT (dB)	PSELFEXT (dB)	ACR (dB)	Propagation delay (ns/100m)
	Max.	Min.	Min.	Min.	Min.	Min.	Min.	Max.
1.0	2.0	74.3	20.0	72.3	67.8	64.8	72	570.0
4.0	3.8	65.3	23.0	63.3	55.8	52.8	61	552.0
8.0	5.3	60.8	24.5	58.8	49.7	46.7	55	546.7
10.0	6.0	59.3	25.0	57.3	47.8	44.8	53	545.4
16.0	7.6	56.2	25.0	54.2	43.7	40.7	49	543.0
20.0	8.5	54.8	25.0	52.8	41.8	38.8	46	542.0
25.0	9.5	53.3	24.3	51.3	39.8	36.8	44	541.2
31.25	10.7	51.9	23.6	49.9	37.9	34.9	41	540.4
62.5	15.4	47.4	21.5	45.4	31.9	28.9	32	538.6
100.0	19.8	44.3	20.1	42.3	27.8	24.8	25	537.6
150	24.7	41.7	18.9	39.7	24.3	21.3	16.9	536.9
200	29.0	39.8	18.0	37.8	21.8	18.8	10.8	536.5
250	32.8	38.3	17.3	36.3	19.8	16.8	5.5	536.3
300	35.0	37.5	17.0	35.5	19.2	15.5	2.5	536.1
600	53.1	33.0	15.0	32.5	11.0	9.5	-20	535.5

Characteristic Graph



Ordering Information

Order Number	Description
CP11-141-12*	Apus™ Cat.6 indoor UTP cable, CM, 305m (Box)
CP11-141-13	Apus™ Cat.6 indoor UTP cable, LSZH, 305m (Reel in box)
CP11-141-14*	Apus™ Cat.6 indoor UTP cable, CMR, 305m (Box)
CP11-141-16*	Apus™ Cat.6 outdoor UTP cable, PE, 305m (Reel)
CP12-141-11	Apus™ Cat.6 outdoor UTP cable, PE, 305m (Reel)