

PROLINK®

www.prolink2u.com

MODEL NO:
PRO700SFC
& PRO700SFCU



Quick Start Guide

Line Interactive UPS

Version 1.00

([English](#) / [Indonesian](#))

BEFORE GETTING STARTED

This document is designed to aid you to get started with the device. If you experience problems following these guides or need further information pertaining to the device, please visit our website at www.prolink2u.com. All specifications are subject to the manufacturer's configuration at the time of shipping and may change without prior notice, written or otherwise.

1. Important Safety Warning

CAUTION:

1. To prevent the risk of fire or electric shock, install in a temperature and humidity controlled indoor area free of conductive contaminants. (See the specifications for the acceptable temperature and humidity range.)
2. To reduce the risk of overheating the UPS, **DO NOT** cover the UPS' cooling vents and avoid exposing the unit to direct sunlight or installing the unit near heat emitting appliances such as space heaters or furnaces.
3. **DO NOT** attach non-computer-related items, such as medical equipment, life-support equipment, microwave ovens, or vacuum cleaners to UPS.
4. **DO NOT** plug the UPS input into its own output.
5. **DO NOT** allow liquids or any foreign object to enter the UPS. **DO NOT** place beverages or any other liquid-containing vessels on or near the unit.
6. In the event of an emergency, press the OFF button and disconnect the power cord from the AC power supply to properly disable the UPS.
7. **DO NOT** attach a power strip or surge suppressor to the UPS.
8. If the UPS is with metal chassis, for safety purpose, grounding is a must during UPS installation in order to reduce leakage current below 3.5mA.
9. Attention hazardous through electric shock. Also with disconnection of this unit from the mains, hazardous voltage still may be accessible through supply from battery. The battery supply should be therefore disconnected in the plus and minus pole at the quick connectors of the battery when maintenance or service work inside the UPS is necessary.
10. Servicing of batteries should be performed or supervised by personnel knowledgeable of batteries and the required precautions. Keep unauthorized personnel away from batteries.
11. When replacing the batteries, use the same number and type of batteries.
12. Internal battery voltage is 12VDC. Sealed, lead-acid, 6-cell battery.
13. **DO NOT** dispose of batteries in a fire. The battery may explode. **DO NOT** open or mutilate the battery or batteries. Released electrolyte is harmful to the skin and eyes.
14. Unplug the UPS prior to cleaning and **DO NOT** use liquid or spray detergent.
15. A battery can present a risk of electric shock and high short circuit current. The following precaution should be observed before replacing batteries:
 - i. Remove watches, rings, or other metal objects.
 - ii. Use tools with insulated handles.
 - iii. Wear rubber gloves and boots.
 - iv. Do not lay tools or metal parts on top of batteries.
 - v. Disconnect charging source prior to connecting or disconnecting batteries terminal.

2. Package Contents

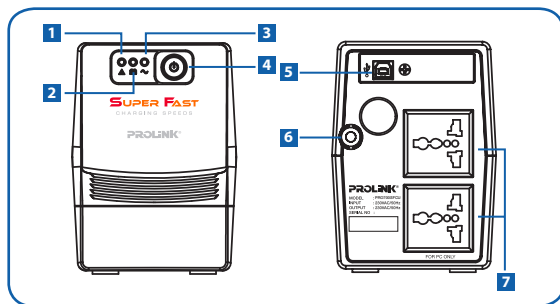
- 1 One (1) unit of Line Interactive UPS (either PRO700SFC or PRO700SFCU)
- 2 One (1) Piece of Quick Start Guide



Note:

- 1 The illustrations in this document may appear different from your model.
- 2 If any of above item is not packed in your package when open, please consult your reseller immediately.

3. Overview



Legend:

- | | |
|--|---|
| 1 Fault Indicator : Red LED Lighting | 5 USB Port (only applicable for PRO700SFCU) |
| 2 Battery Mode Indicator : Yellow LED Flashing | 6 Power AC Input |
| 3 AC Mode Indicator : Green LED Lighting | 7 Backup Output |
| 4 Power Switch | |

4. Installation & Initial Startup



Note:

Before installation, please inspect the unit. Be sure that nothing inside the package is damaged.

Connect to Utility and Charging

Plug in the AC input cord to the wall outlet. For the best results, suggest to charge the battery at least 6 hours before initial use. The unit charges its battery while connecting to the utility.



Placement & Storage Conditions

Install the UPS in a protected area that is free of excessive dust and has adequate air flow. Please place the UPS away from other units at least 20 cm to avoid interference. **DO NOT** operate the UPS where the temperature and humidity is outside the specific limits. (Please check the specs for the limitations.)



Connect the Loads

Plug in the loads to output receptacles on the rear panel of the UPS. Simply turn on the power switch of UPS unit, and then devices connected to the UPS will be protected by UPS unit.

CAUTION:

NEVER connect a laser printer or scanner to the UPS unit. This may cause the damage of the unit.



Connect Communication Cable *(Only for the model with USB port)*

To allow for unattended UPS shutdown/start-up and status monitoring, connect the communication cable one end to the USB port and the other to the communication port of your PC. With the monitoring software installed, you can schedule UPS shutdown/start-up and monitor UPS status through PC.

Turn On/Off the Unit

Turn on the UPS unit by pressing the power switch. Turn off the UPS unit by pressing again the power switch.

5. Software Download & Installation

Note:

Only for model with communication port.

Please follow steps below to download and install monitoring software:

1. Go to the website <http://www.power-software-download.com>
2. Click ViewPower software icon and then choose your required OS to download the software.
3. Follow the on-screen instructions to install the software.
4. When your computer restarts, the monitoring software will appear as an orange plug icon located in the system tray, near the clock.

6. Troubleshooting

Use the table below to solve minor problems.

Problem	Possible Cause	Solutions
No LED display on the front panel	Low battery.	Charge the UPS at least 6 hours.
	Battery fault.	Replace the battery with the same type of battery.
	The UPS is not turned on.	Press the power switch again to turn on the UPS.
Alarm continuously sounds when the main is normal.	The UPS is overload.	Remove some loads first. Before reconnecting equipment, please verify that the load matches the UPS capability specified in the specs.
When power fails, back-up time is shortening.	The UPS is overload.	Remove some critical load.
	Battery voltage is too low.	Charge the UPS at least 6 hours.
	Battery defect. It might be due to high temperature operation environment, or improper operation to battery.	Replace the battery with the same type of battery.
The main is normal but yellow LED flashing.	Power cord is loose.	Reconnect the power cord properly.

7. Specifications

CAPACITY		650VA
INPUT	Voltage Range Frequency Phase	140 - 300VAC $\pm 5\%$ 50Hz/60Hz (Auto-sensing) Single + GND
OUTPUT	Voltage Range Battery Mode Frequency Waveform Transfer Time	230VAC +12% -14% 230VAC +/-10% 50Hz $\pm 1\%$ (Battery Mode) Simulated Sine Wave (Battery Mode) Sine Wave (AC Mode) 2ms typical
BATTERY	Type Backup Time Recharge Time	12V/8.2AH - 1pc 8 - 30 mins depending on load 2 - 4 hours recover to 90% capacity
PROTECTION/ MONITORING	Short Circuit Protection Surge Protection Alarm Overload Protection Intelligent Battery Management	Yes (Line Mode and Battery Mode) Yes Audible & Visual Line Mode - 100 - 120% 5mins change to fault mode >120% change to fault mode immediately Battery Mode - 100 - 120% 5 secs shutdown >120% shutdown immediately Prevent overcharging of battery Protect battery and prolong battery life
INTERFACE	USB Connector ^{#1} Software ^{#1}	AC Fault, Battery Low, Shutdown UPS Support Windows® 2000/2003/XP/Vista/2008/7, Linux, Unix, and MAC
GENERAL	Noise Level Temperature Humidity Power Factor Built in AVR	<40dB 0°C - 40°C 0 - 90% Up to 0.7 TRUE Full AVR (3 steps)

Note:

#1 : Only applicable for Model PRO700SFCU.

1. Peringatan Penting Keselamatan

PERHATIAN:

1. Untuk mencegah resiko kebakaran atau sengatan listrik, pasang pada daerah yang suhu dan kelembabannya terkontrol (Lihat spesifikasi untuk rentang suhu dan kelembaban yang ditentukan.)
2. Untuk mengurangi resiko overheating dari UPS, **JANGAN** menutup ventilasi UPS dan menempatkan pada daerah yang terkena sinar matahari langsung atau menempatkan dekat dengan peralatan yang memancarkan panas.
3. **JANGAN** menghubungkan perangkat yang tidak berhubungan dengan computer, seperti peralatan medis, oven microwave, atau vacuum pembersih pada UPS.
4. **JANGAN** menyambung input UPS ke output UPS itu sendiri.
5. **JANGAN** biarkan cairan atau benda asing masuk kedalam UPS. **JANGAN** menempatkan minuman atau cairan dekat dengan unit.
6. Dalam keadaan darurat, tekan tombol OFF dan cabut kabel power dari sumber listrik untuk memastikan UPS benar benar dalam kondisi tidak aktif.
7. **JANGAN** menambatkan power strip/surge pada UPS.
8. Jika UPS menggunakan casing dari bahan logam, untuk tujuan keselamatan, grounding menjadi keharusan disaat menginstal UPS untuk mengurangi kebocoran arus dibawah 3.5mA.
9. Perhatian tersengat listrik sangat berbahaya. Juga dengan melepaskan unit ini dari sumber listrik, tegangan berbahaya masih tersimpan pada baterai. Kabel baterai juga harus dilepas disaat melakukan perawatan atau perbaikan UPS jika diperlukan.
10. Perbaikan pada baterai harus dilakukan oleh personil yang memiliki pengetahuan tentang baterai dan tindakan pencegahan jika diperlukan. Jauhkan dari personil yang tidak mengerti.
11. Ketika mengganti baterai, gunakan nomor dan jenis baterai yang sama.
12. Tegangan baterai internal adalah 12VDC. Sealed, lead-acid, baterai 6-cell.
13. **JANGAN** membuang baterai kedalam api. Baterai dapat meledak. **JANGAN** membuka atau merusa baterai. Elektrolit yang terlepas berbahaya bagi kulit dan mata.
14. Cabut UPS sebelum melakukan pembersihan dan **JANGAN** gunakan deterjen cair atau spray.
15. Baterai dapat menimbulkan resiko sengatan listrik dan hubungan singkat. Perhatikan beberapa pencegahan berikut sebelum mengganti baterai:
 - i. Lepaskan jam tangan, cincin, atau benda logam lainnya.
 - ii. Gunakan alat yang terisolasi.
 - iii. Pakailah sarung tangan dan sepatu bot dari bahan karet.
 - iv. Jangan meletakkan peralatan atau logam diatas baterai.
 - v. Cabut kabel yang terhubung langsung ke sumber listrik sebelum menyambung/mencabut kabel terminal pada baterai.

2. Isi Perangkat

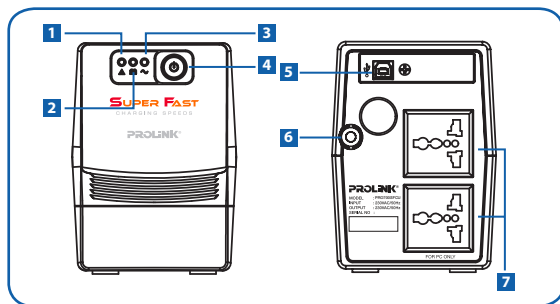
- 1 Satu (1) unit Line Interactive UPS
(baik PRO700SFC *atau* PRO700SFCU)
- 2 Satu (1) Piece Lembar Panduan Singkat



Catatan:

- 1 Ilustrasi dalam dokumen ini mungkin tampak berbeda dari model anda.
- 2 Jika salah satu item di atas tidak dikemas dalam paket anda ketika terbuka, silakan berkonsultasi dengan reseller anda segera.

3. Ikhtisar



Legend:

- | | |
|---------------------------------------|--|
| 1 LED Fault : Menyala Merah | 5 Port USB (<i>hanya untuk PRO700SFCU</i>) |
| 2 LED Modus Baterai : Berkedip Kuning | 6 Power AC Input |
| 3 LED Modus AC : Menyala Hijau | 7 Backup Output |
| 4 Power Switch | |

4. Instalasi Dan Sebelum Memulai



Catatan:

Sebelum melakukan instalasi, mohon unit diperiksa. Pastikan tidak ada yang rusak didalam kemasan.

Sambungkan ke Listrik dan Charging

Sambungkan kabel power ke sumber listrik. Untuk hasil yang terbaik, disarankan untuk mencharge baterai minimal 6 jam sebelum digunakan. Unit akan tercharge ketika terhubung ke sumber listrik.



Penempatan & Penyimpanan

Penempatan UPS sebaiknya berada pada daerah yang bebas debu dan memiliki sirkulasi udara yang baik. Harap menempatkan UPS minimal 20 cm dari unit yang lain untuk menghindari interferensi. JANGAN menjalankan UPS disaat suhu dan kelembaban berada diluar batas yang telah ditentukan. (Silahkan periksa spesifikasi untuk mengetahui batasan.)



Menghubungkan ke Beban

Sambungkan beban pada konektor output yang berada pada panel belakang UPS. Hidupkan tombol power UPS, dan kemudian perangkat yang terhubung ke UPS akan terlindung oleh UPS.

PERHATIAN:

JANGAN menghubungkan printer laser atau scanner ke UPS. Hal ini akan menyebabkan kerusakan unit.



Hubungkan Kabel Komunikasi (Hanya untuk model dengan port USB)

Untuk memungkinkan untuk auto shutdown/startup pada UPS dan monitoring status, sambungkan kabel komunikasi pada port USB lalu ke port komunikasi pada PC anda. Dengan software monitoring yang terinstal, anda dapat membuat jadwal untuk menshutdown/start-up dan memonitor UPS anda melalui PC.

Menghidupkan/Mematikan Unit

Menghidupkan UPS dengan menekan tombol power. Mematikan UPS dengan menekan kembali tombol power.

5. Software Download & Instalasi

Catatan:

Only for model with communication port.

Please follow steps below to download and install monitoring software:

1. Pergi ke situs <http://www.power-software-download.com>
2. Klik ikon perangkat lunak ViewPower dan kemudian memilih OS yang dibutuhkan untuk men-download perangkat lunak.
3. Ikuti petunjuk pada layar untuk menginstal perangkat lunak.
4. Ketika restart komputer anda, software monitoring akan muncul sebagai ikon plug jeruk yang terletak di baki sistem, dekat jam.

6. Permasalahan

Use the table below to solve minor problems.

Masalah	Kemungkinan	Solusi
Tidak ada LED yang menyala pada panel depan.	Baterai lemah.	Charge UPS minimal 6 jam.
	Baterai rusak.	Ganti baterai dengan jenis yang sama.
	UPS belum dihidupkan.	Tekan saklar daya lagi untuk menghidupkan UPS.
Alarm secara terus menerus berbunyi ketika sumber listrik normal.	UPS overload.	Lepaskan beberapa beban yang terhubung ke UPS. Sebelum dipasang kembali, harap pastikan beban masih dapat diterima oleh UPS yang sesuai pada spesifikas.
Ketika sumber listrik terputus, waktu back-up sangat pendek.	UPS overload.	Lepaskan beberapa beban critical.
	Tegangan baterai sangat rendah.	Charge UPS minimal 6 jam.
	Baterai rusak. Mungkin disebabkan karena suhu ruangan yang tinggi, atau operasi yang tidak layak pada baterai.	Ganti baterai dengan jenis yang sama.
Listrik normal tetapi LED Kuning berkedip.	Kabel power longgar.	Hubungkan kembali kabel power dengan benar.

7. Spesifikasi

CAPACITY		650VA
INPUT	Voltage Range Frequency Phase	140 - 300VAC $\pm 5\%$ 50Hz/60Hz (Auto-sensing) Single + GND
OUTPUT	Voltage Range Battery Mode Frequency Waveform Transfer Time	230VAC +12% -14% 230VAC +/-10% 50Hz $\pm 1\%$ (Battery Mode) Simulated Sine Wave (Battery Mode) Sine Wave (AC Mode) 2ms typical
BATTERY	Type Backup Time Recharge Time	12V/8.2AH - 1pc 8 - 30 mins depending on load 2 - 4 hours recover to 90% capacity
PROTECTION/ MONITORING	Short Circuit Protection Surge Protection Alarm Overload Protection Intelligent Battery Management	Yes (Line Mode and Battery Mode) Yes Audible & Visual Line Mode - 100 - 120% 5mins change to fault mode >120% change to fault mode immediately Battery Mode - 100 - 120% 5 secs shutdown >120% shutdown immediately Prevent overcharging of battery Protect battery and prolong battery life
INTERFACE	USB Connector #1 Software #1	AC Fault, Battery Low, Shutdown UPS Support Windows® 2000/2003/XP/Vista/2008/7, Linux, Unix, and MAC
GENERAL	Noise Level Temperature Humidity Power Factor Built in AVR	<40dB 0°C - 40°C 0 - 90% Up to 0.7 TRUE Full AVR (3 steps)

Note:

#1: Only applicable for Model PRO700SFCU.

KETENTUAN GARANSI (for Indonesia region only)

PROLINK®
Your Reliable IT Products

Kami mengucapkan terima kasih atas kepercayaan Anda memilih produk kami dan selaku distributor di Indonesia, kami memberikan garansi produk selama 1 (satu) tahun.

1. Garansi Hanya Berlaku Jika :

- Diisi dengan jelas, lengkap dan benar.
- Jika telah dikirimkan dan diterima oleh PT. ProLink Intidata Nusantara.
- Memperlihatkan kartu garansi asli dan nota pembelian pada saat klaim service.

2. Garansi Tidak Berlaku Apabila :

- Kerusakan yang disebabkan oleh, kelalaian pemakai, bencana alam, kebakaran, tegangan listrik yang terlalu tinggi / rendah, terkena cairan.
- Kerusakan yang diakibatkan karena transportasi / pengiriman, pemasangan / pengoperasian yang tidak sesuai dengan buku petunjuk, penyambungan dengan alat lain.
- Barang yang diservice tidak sesuai dengan kartu garansi.
- Serial number rusak / robek / tidak ada.

3. Ruang Lingkup Garansi :

- Garansi hanya mencakup bagian-bagian / komponen perangkat keras dari konfigurasi standar yang terdapat pada spesifikasi produk sesuai dengan faktor.
- Khusus netbook garansi baterai hanya berlaku selama 6 bulan sejak tgl. pembelian.

* Biaya pengiriman ditanggung pembeli



PROLINK®
Your Reliable IT Products

Tempelkan perangkat
disini.
Hanya untuk pengeposan
di Indonesia

Kepada Yth.
Customer Service
PT. PROLINK INTIDATA NUSANTARA
Jl. Cideng Barat No.79
Jakarta Pusat 10150 - Indonesia



KARTU GARANSI
(for Indonesia region only)

No :**KARTU GARANSI / WARRANTY CARD***(for Indonesia region only)*

Barang : Data Comm Networking Netbook

Produk : UPS Display* Accessories

S/N :

Nama :
Name :

Model :

Alamat :
Address :

Tgl. Pembelian :
Purchase Date :

Dealer :
Toko :

Kota : **Kode Pos** :

Kota :
City :

Tel / Fax :**Email :****Pelanggan****PT. Prolink Intidata Nusantara****Cap Toko**

*Kartu Garansi harus diisi lengkap, kirimkan paling lambat 14 Hari setelah Tgl. Pembelian / Please Fill - in Your Warranty Card Completely and Send max.14 day after Purchase
* Terdaftar No.2134/1.824.124*

Alamat Pengiriman : **PT. PROLINK INTIDATA NUSANTARA**
Address : **Jl. Cideng Barat No.79 Jakarta Pusat 10150 - Indonesia**

Telp. : (62-21) 34831777
Fax : (62-21) 34830788
Email : service@prolink.co.id

No :**KARTU GARANSI / WARRANTY CARD***(for Indonesia region only)*

Barang : Data Comm Networking Netbook

Produk : UPS Display* Accessories

S/N :

Nama :
Name :

Model :

Alamat :
Address :

Tgl. Pembelian :
Purchase Date :

Dealer :
Toko :

Kota : **Kode Pos** :

Kota :
City :

Tel / Fax :**Email :****Pelanggan****PT. Prolink Intidata Nusantara****Cap Toko**

*Kartu Garansi harus diisi lengkap, kirimkan paling lambat 14 Hari setelah Tgl. Pembelian / Please Fill - in Your Warranty Card Completely and Send max.14 day after Purchase
* Terdaftar No.2134/1.824.124*

Alamat Pengiriman : **PT. PROLINK INTIDATA NUSANTARA**
Address : **Jl. Cideng Barat No.79 Jakarta Pusat 10150 - Indonesia**

Telp. : (62-21) 34831777
Fax : (62-21) 34830788
Email : service@prolink.co.id

Worldwide Customer Care Centers

INDONESIA Office

PT PROLINK INTIDATA NUSANTARA

Walk-In : Jl. Cideng Barat No. 79, Jakarta Pusat 10150, Indonesia.

Telephone : +62 21 3483 1777

Email Support : support@prolink.co.id

MALAYSIA Office

FIDA SYSTEMS (M) SDN BHD

Walk-In : 29 Jalan USJ 1/31, 47600 Subang Jaya, Selangor Darul Ehsan, Malaysia.

Telephone : +60 3 8024 9151

Email Support : support@prolink2u.com

SINGAPORE Office

FIDA INTERNATIONAL (S) PTE LTD

Walk-In : Block 16 Kallang Place #06-02, Kallang Basin Industrial Estate, Singapore 339156.

Telephone : +65 6357 0668

Email Support : support@fida.com

Technical Support Hotline

INDONESIA : +62 21 3483 1717

MALAYSIA : +60 3 8023 9151

SINGAPORE : +65 6357 0666

Note: Closed on Saturdays, Sundays and local/regional Public Holidays.

Register Online For Your Product Warranty @ www.prolink2u.com/register

PROLINK® is a trademark of FIDA INTERNATIONAL (S) PTE LTD and is manufactured under its authority. All other brands, products, services, logos and company names mentioned herein are trademarks of their respective owners. All specifications, designs and contents are subject to changes without prior notice. © Copyright 2013. PROLINK® all rights reserved.