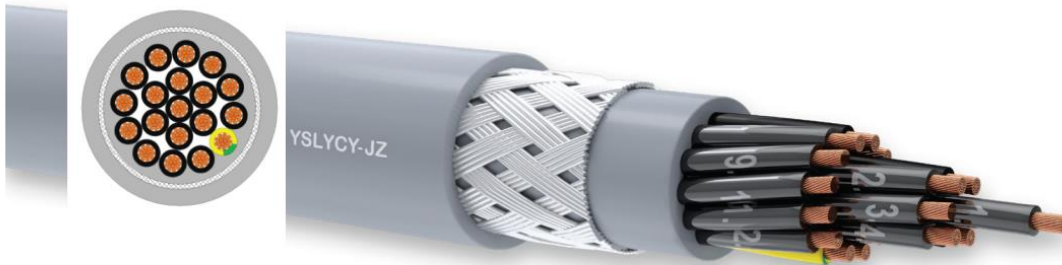


# Control and connection cables

## ULControl® YSLYCY

Screened PVC control cable with numbered cores



GOOD EMC\* CHARACTERISTIC / FLEXIBLE CABLE DESIGN / SMALL BENDING RADIUS / FLAME RETARDANT CHARACTERISTIC



### APPLICATION

- In places where electro-magnetic interference and influence exists
- Instrumentation and Control Engineering
- Fuel Oil Pumps
- In machine production as measurement and control cable
- Production and Assembly Lines
- Dry and humid places
- In places where medium level mechanical stresses exist

### CONSTRUCTION

- 1-Conductor** IEC 60228; DIN EN 60228; EN 60228 Class 5 Stranded Electrolytic Bare Copper
- 2-Insulation** EN 50363-3 PVC Compound
- 3-Colour Code** DIN VDE 0293; TS EN 50334 or Black cores with white number Imprinted
- 4-Stranding** In layers of optimum pitch
- 5-Inner Sheath** EN 50363-4-1 PVC Compound
- 6-Screen** Tinned Copper Braid
- 7-Outer Sheath** EN 50363-4-1 PVC Compound
- 8-Sheath Colour** RAL 7001 Grey or Transparent

### TECHNICAL CHARACTERISTICS

CONDUCTOR RESISTANCE		INSULATION RESISTANCE	CURRENT CARRYING CAPACITY		OPERATING VOLTAGE	TEST VOLTAGE	BENDING RADIUS	TEMPERATURE RANGE	FLAME RETARDANT TEST
mm <sup>2</sup>	Ω/km	20MΩxkm	mm <sup>2</sup>	A	300/500V	2000V	10x Cable Ø	Hareketli / Mobile -5°C-+70°C Sabit Sabit / Stable -30°C-+70°C	IEC 60332-1-2 DIN EN 60332-1-2 EN 60332-1-2
0,5	39		0,5	6,0					
0,75	26		0,75	13					
1,0	19,5		1,0	16					
1,5	13,3		1,5	20					
2,5	7,98		2,5	25					

### NOTES

- \*EMC: Electromagnetic compatibility
- With their flexible design they can easily be used in narrow spaces.
- These cables are not suitable for outdoor use.
- OZ**: Black insulation+Without Green/Yellow earthing core
- JZ**: Black insulation+Green/Yellow earthing core
- OB**: Colour code insulation+Without Green/Yellow earthing core
- JB**: Colour code insulation+With Green/Yellow earthing core